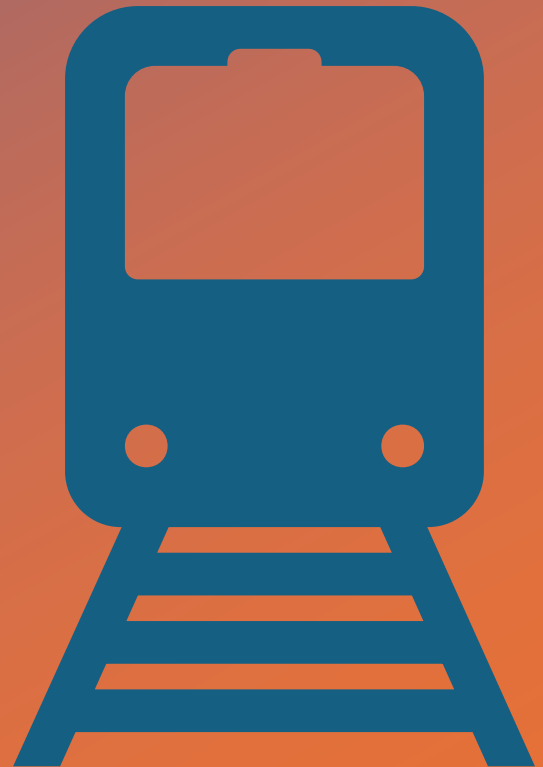


Rail Services

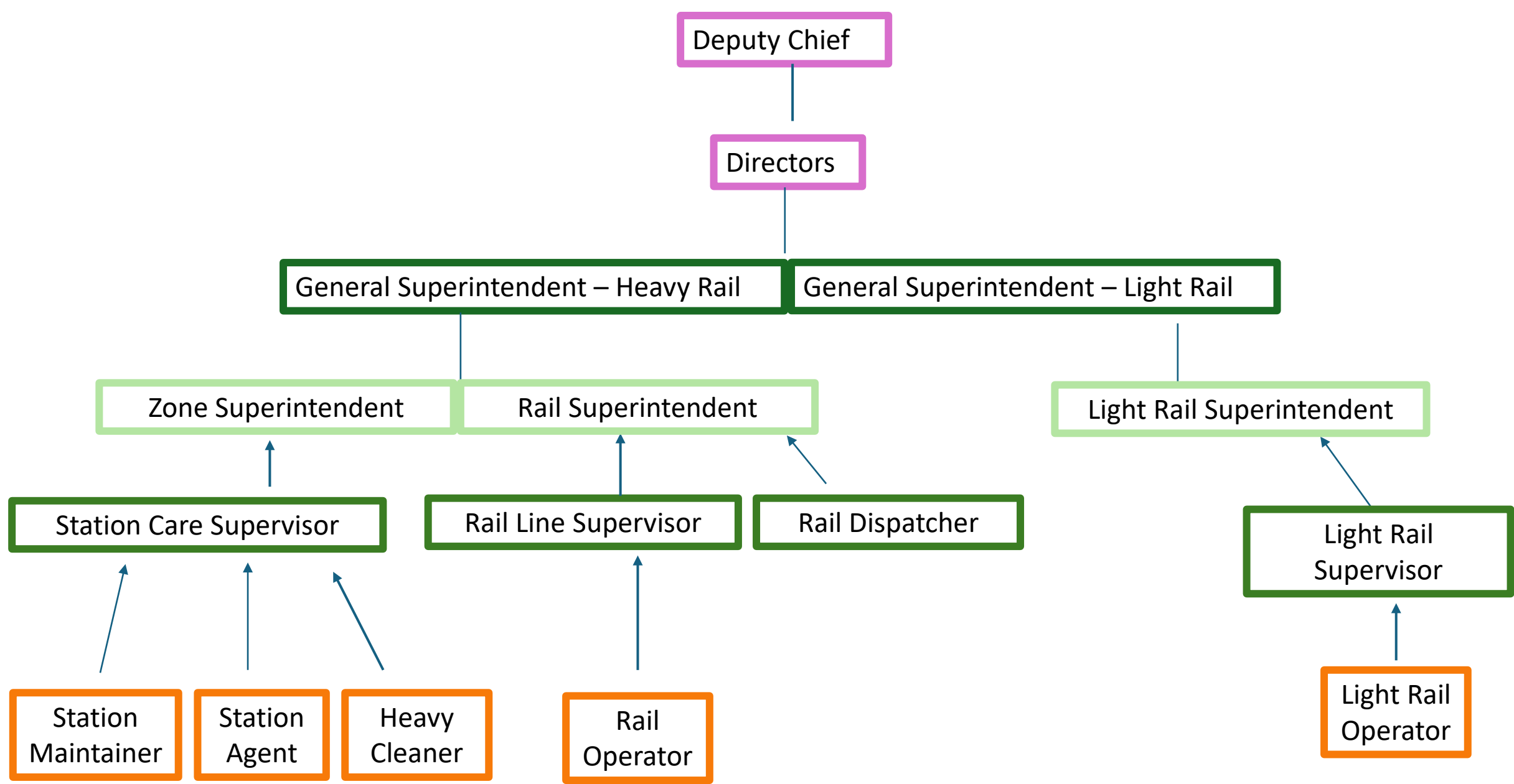
Rider's Advisory Council Meeting



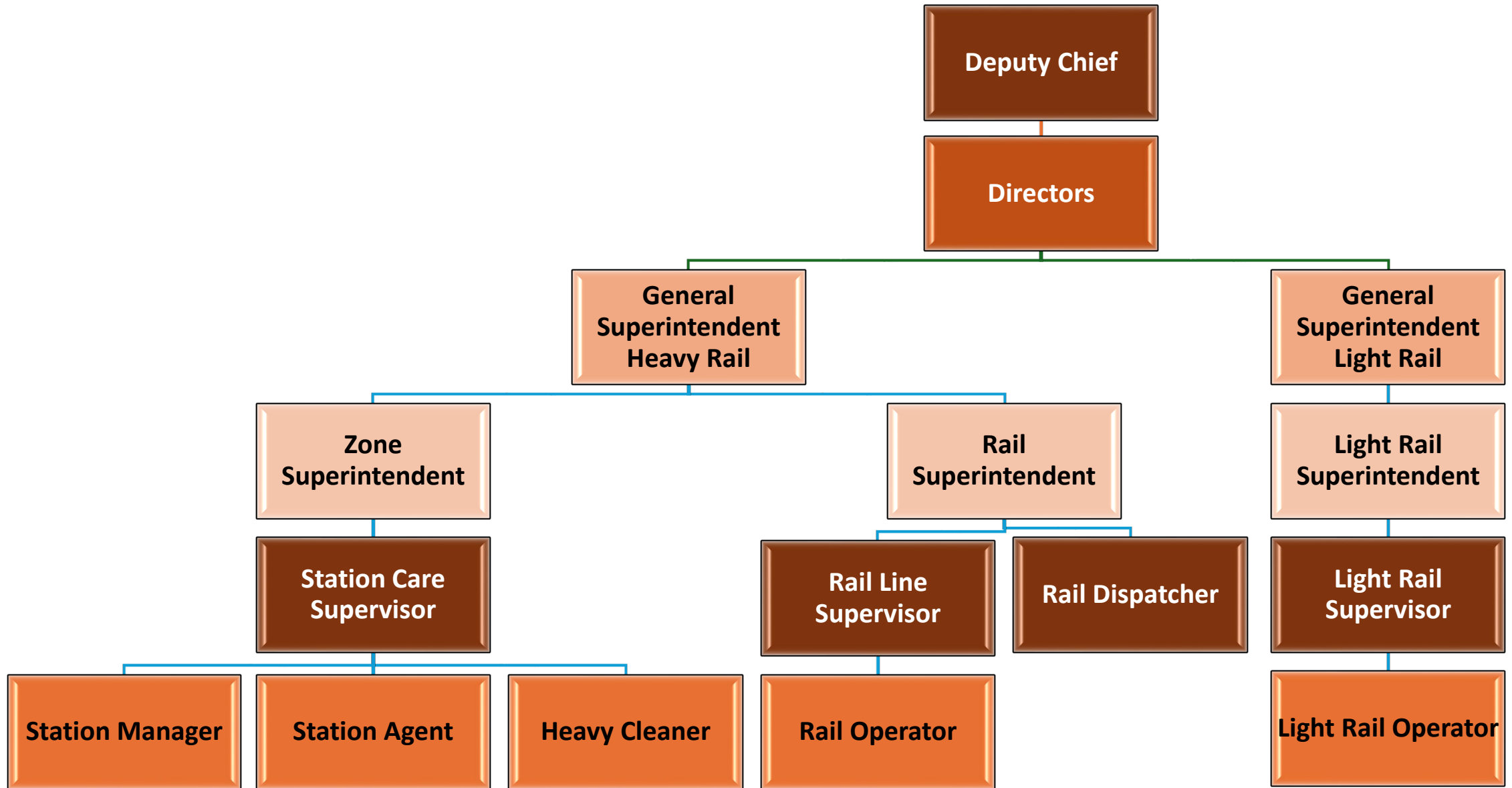


About Me!

- Who am I
- My career journey prior to MARTA
- Why I chose MARTA



Rail Services Organization





Heavy Rail

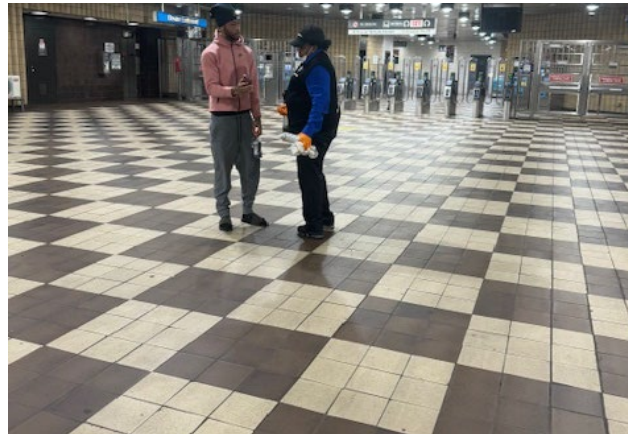
- We operate four rail lines: the Red and Gold lines on the North/South route, and the Blue and Green lines on the East/West route
- Our fleet includes CQ310, CQ311 and CQ312 trains, which have been in service for approximately 20 - 45 years. On the Green line, we run a 2-car train consist, while all other lines operate with 6-car trains.
- Operating hours are from 4:45 AM to 2:00 AM, with a 15-minute headway during peak service.
- All of our trains are maintained across three rail yards: South Yard, Armour Yard, and Avondale Yard.



Heavy Rail

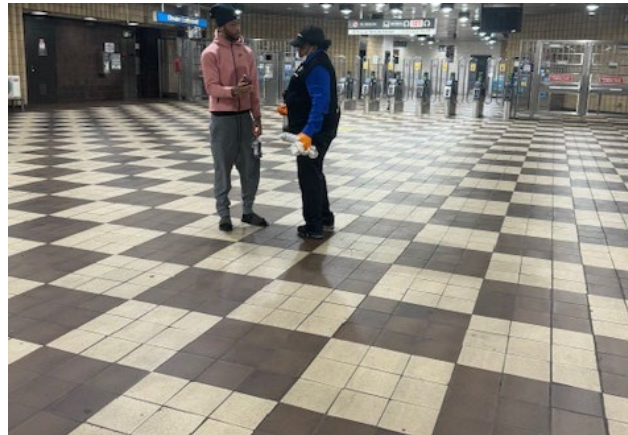
- We operate four rail lines
 - Red and Gold lines - North/South route
 - Blue and Green lines - East/West route
- Our fleet have been in service for approximately 20 - 45 years
- On the Green line, we run a 2-car train consist
 - All other lines operate with 6-car trains
- Operating hours are from 4:45 AM to 2:00 AM
 - 15-minute headways during peak service
- All of our trains are maintained across three rail yards





Station Services

- There are 38 MARTA rail stations
- Five Points is our largest stations also known has the transfer hub
- Providing exceptional customer service to all passengers
- Ensuring the cleanliness and upkeep of the station
- Addressing and resolving customer complaints promptly
- Reporting and safety hazards or defects within the station to maintain a safe environment



Station Services

- There are 38 MARTA rail stations
 - Five Points is our largest stations also known has the transfer hub
- Focus Service Areas
 - Providing exceptional customer service
 - Ensuring the cleanliness and upkeep of the station
 - Addressing and resolving customer needs promptly
 - Reporting of safety hazards or defects within the station to maintain a safe environment



Light Rail - StreetCar

- MARTA's Light Rail / Streetcar system in downtown Atlanta spans 2.7 miles of track and has 12 stops.
- It's a fantastic way to explore the city's popular attractions, hotels, and restaurants.
- The Streetcars operates daily from 8:15 to 11:30pm.



Light Rail - Streetcar



- MARTA's Light Rail / Streetcar system in downtown Atlanta spans 2.7 miles with 12 stops
- The Streetcars operates daily from 8:15 to 11:30pm



It's a fantastic way to explore the city's popular attractions, hotels, and restaurants



What's New! STADLER CQ400 Trains

- These trains come with 128 seats and a spacious standing area, these trains are designed with accessibility in mind, compliant with the ADA for easy access.
- The bright interior features wide aisles and LED lights above the doors, ensuring a comfortable experience for all passengers
- Plus, each train will offer charging stations, Wi-Fi, and generous luggage racks for those traveling to Hartsfield–Jackson Atlanta International Airport.





What's New!

STADLER CQ400 Trains

- Designed with accessibility in mind
 - Compliant with the ADA for easy access
 - Comes with 128 seats and a spacious standing area and wide aisles
 - Luggage racks for those traveling to Hartsfield–Jackson Atlanta International Airport
- Additional features include;
 - Bright interior features and LED lights above the doors
 - Charging stations and Wi-Fi



Thank You!

